



PT 20

Commercial Treadmill



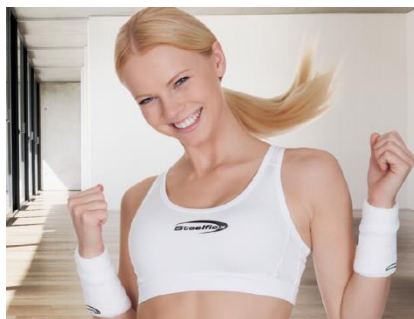
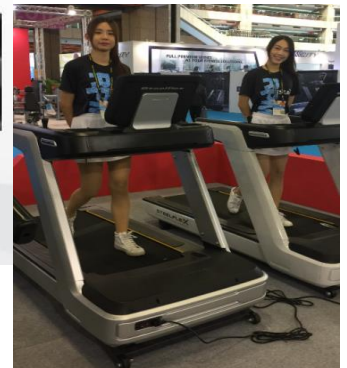
The PT-20 is a Full Commercial Treadmill boasting easy to operate 'one touch' user control. Oversized display console with bright coloured buttons enable ease of use. Ergonomics was applied to every details in the design of the PT-20. Includes a eight-point, three level rated anti- shocked system that matches the stress of knees and ankles. This means low impact and greater user comfort during any intense cardio workout. The P SERIES of PT-20 large steel main frame promotes further overall stability.



PT 20

Display: 6 windows with matrix display
 Programs : Total Programs (11) ,Manual , Rolling Hills, Fat Burn , 5K, H.R.C ,Training(Gerkin,Interval, Long SlowDistance,Custom 1& 2),APP,
 Speed Range: 0.8~25KPH / 0.5~15.5MPH
 Incline Range : -3%~15% (454kgs / 1000Lbs Thrust Motor)
 Motor System: 5.0 HP AC Motor with AC Frequency Conversion
 Rollers :Precision mode 90 mm (3.5") With Large O.D.Bearings
 Running Area: 152x 56 cm / 60" x 22"
 Dimensions(LxWxH) : 213 x 94 x 152 cm / 84" x 37" x 60"
 Max.User Weight : 400 lbs / 180 kg

[See more here](#)



INTERNATIONAL
 3F28, No. 5, Shin-Yi Rd., Sec. 5, Taipei ,Taiwan110
 Tel:+886-2-2720-9980
 Fax:+886-2-2722-9750
 E-mail:joong@ms13.hinet.net
<http://www.steelflexfitness.com>